

Health and Safety Information

HSI 35

COMAH Aggregate Checks



Contents

Title	Page
Introduction	2
COMAH aggregation checks (1)	3
COMAH aggregation checks (2)	4
COMAH aggregation checks (3)	5
Procedure owners / latest changes to this version	6

Introduction

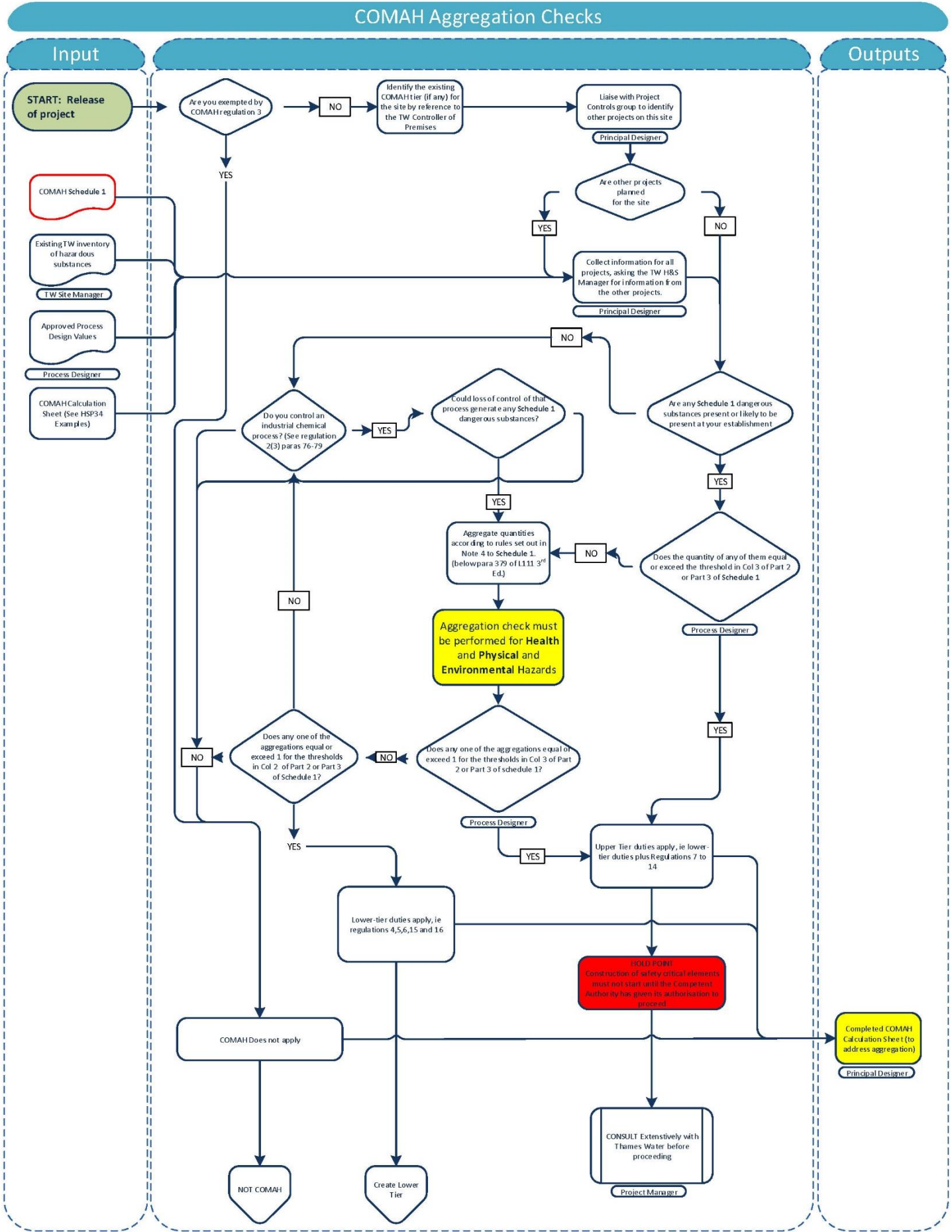
The Control of Major Accident Hazard (COMAH) regulations are concerned with the storage of Dangerous Substances in significant quantities. For Thames Water the key relevant dangerous substances include those that are:

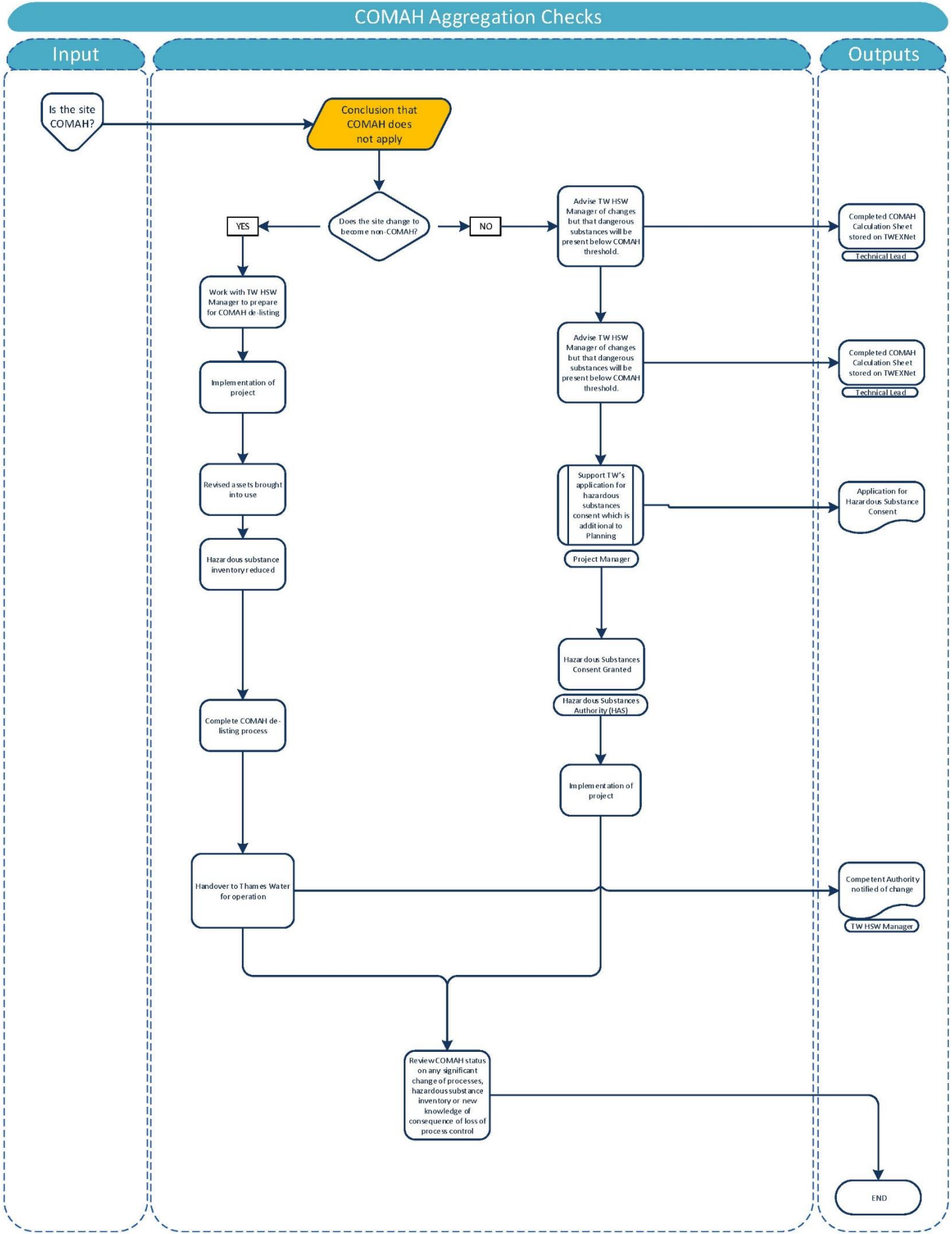
- a significant hazard to health (i.e toxic) such as Chlorine
- a significant physical hazard (flammable or aid to combustion) such as Biogas
- a significant hazard to the environment such as Sodium Hypochlorite

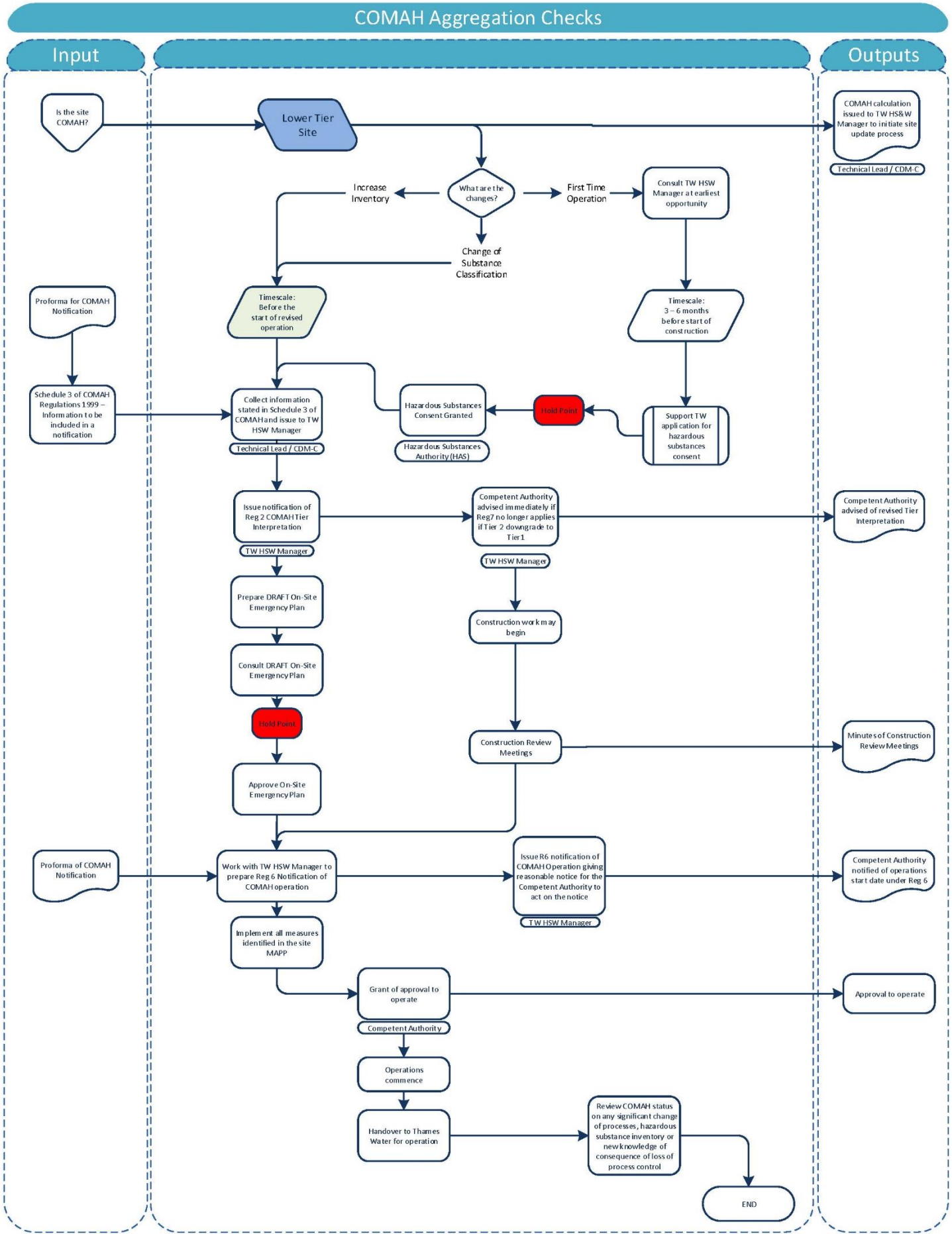
The flow chart within this document is intended to aid the review process for work on COMAH sites or work on sites that are not currently within the scope of these regulations but may qualify due to an increase in dangerous substances as a result of planned work.

Within the flow chart are several design hold points. At each of these points the Competent Authority must be engaged with prior to progressing.

Contact with the Competent Authority must be via the Health and Safety Assurance Governance and Regulation Manager







Document Control	
Document Owner:	David Knight
Document Authorised By:	Director of Health Safety and Wellbeing
Version:	2
Date:	December 2022
Change Request Reference:	Periodic review
Review / Revision by:	David Knight
Summary of changes to this version:	Elaboration of the introduction
Please complete a Change Request Form for any identified changes required to this document.	